



**TrackingTheWorld**  
GPS Tracking Solutions

TrackingTheWorld.com

**GAT-Pro**

**Asset Tracking Device**

**USER MANUAL**



<b>Document Title</b>	GAT-Pro User Manual
<b>Version</b>	1.02
<b>Date</b>	2013-6-5
<b>Status</b>	Release
<b>Document Control ID</b>	TTW-GAT-Pro-UM001

#### General Notes

TrackingTheWorld offers this information as a service to its customers, to support application and engineering efforts that use the products designed by TrackingTheWorld. The information provided is based upon requirements specifically provided to TrackingTheWorld by the customers. TrackingTheWorld has not undertaken any independent search for additional relevant information, including any information that may be in the customer's possession. Furthermore, system validation of this product designed by TrackingTheWorld within a larger electronic system remains the responsibility of the customer or the customer's system integrator. All specifications supplied herein are subject to change.

#### Copyright

This document contains proprietary technical information which is the property of TrackingTheWorld. copying of this document and giving it to others and the using or communication of the contents thereof, are forbidden without express authority. Offenders are liable to the payment of damages. All rights reserved in the event of grant of a patent or the registration of a utility model or design. All specification supplied herein are subject to change without notice at any time.

Copyright © TrackingTheWorld 2017

**For More Information:** Please contact TrackingTheWorld, 1633 Bayshore Highway, Suite 390, Burlingame, CA. 94010, USA  
Phone: +1.650.692.8100 – Email: [info@trackingtheworld.com](mailto:info@trackingtheworld.com) – Website: [www.trackingtheworld.com](http://www.trackingtheworld.com)

Copyright © TrackingTheWorld. All rights reserved. Information in this publication supersedes that in all previously published material. Specification and price change privileges reserved. All trade names referenced are the service marks, trademarks, or registered trademarks of their respective companies.

## Contents

Contents.....	3
1. Introduction.....	7
1.1. Reference .....	7
1.2. Terms and Abbreviations .....	7
2. Product Overview .....	8
2.1. Check Parts List .....	8
2.2. Parts List.....	9
2.3. Interface Definition .....	9
3. Getting Started .....	11
3.1. Opening the Case .....	11
3.2. Closing the Case .....	11
3.3. Installing a SIM Card .....	12
3.4. Installing the Internal Backup Battery .....	12
3.5. Power On the Device .....	13
3.6. Direction of GAT-PRO Placement.....	13
3.7. Device Status LED.....	14

**For More Information:** Please contact TrackingTheWorld, 1633 Bayshore Highway, Suite 390, Burlingame, CA. 94010, USA  
Phone: +1.650.692.8100 – Email: [info@trackingtheworld.com](mailto:info@trackingtheworld.com) – Website: [www.trackingtheworld.com](http://www.trackingtheworld.com)

Copyright © TrackingTheWorld. All rights reserved. Information in this publication supersedes that in all previously published material. Specification and price change privileges reserved. All trade names referenced are the service marks, trademarks, or registered trademarks of their respective companies.

## Table Index

Table 1.	GAT-PRO Protocol Reference .....	7
Table 2.	Terms and Abbreviations .....	7
Table 3.	Parts List .....	9
Table 4.	Description of 8 PIN Connections .....	10
Table 5.	Definition of Device status and LED .....	14

**For More Information:** Please contact TrackingTheWorld, 1633 Bayshore Highway, Suite 390, Burlingame, CA. 94010, USA  
Phone: +1.650.692.8100 – Email: [info@trackingtheworld.com](mailto:info@trackingtheworld.com) – Website: [www.trackingtheworld.com](http://www.trackingtheworld.com)

Copyright © TrackingTheWorld. All rights reserved. Information in this publication supersedes that in all previously published material. Specification and price change privileges reserved. All trade names referenced are the service marks, trademarks, or registered trademarks of their respective companies.

## Figure Index

Figure 1.	Appearance of GAT-PRO.....	8
Figure 2.	The 8 PIN connector on the GAT-PRO.....	9
Figure 3.	Opening the Case.....	11
Figure 4.	Closing the Case .....	11
Figure 5.	SIM Card Installation.....	12
Figure 6.	Backup Battery Installation.....	12
Figure 7.	GAT-PRO Status LED .....	13
Figure 8.	Direction of GAT-PRO Placement .....	13

**For More Information:** Please contact TrackingTheWorld, 1633 Bayshore Highway, Suite 390, Burlingame, CA. 94010, USA  
Phone: +1.650.692.8100 – Email: [info@trackingtheworld.com](mailto:info@trackingtheworld.com) – Website: [www.trackingtheworld.com](http://www.trackingtheworld.com)

Copyright © TrackingTheWorld. All rights reserved. Information in this publication supersedes that in all previously published material. Specification and price change privileges reserved. All trade names referenced are the service marks, trademarks, or registered trademarks of their respective companies.

**Revision History**

Revision	Date	Author	Description of change
1.00	2012-6-11	Cid Xu	Initial
1.01	2013-6-3	Tony.Pei	Add the direction of GAT-PRO placement
1.02	2016-12-17	Hazard Zhang	Update pictures for new design

**For More Information:** Please contact TrackingTheWorld, 1633 Bayshore Highway, Suite 390, Burlingame, CA. 94010, USA  
Phone: +1.650.692.8100 – Email: [info@trackingtheworld.com](mailto:info@trackingtheworld.com) – Website: [www.trackingtheworld.com](http://www.trackingtheworld.com)

Copyright © TrackingTheWorld. All rights reserved. Information in this publication supersedes that in all previously published material. Specification and price change privileges reserved. All trade names referenced are the service marks, trademarks, or registered trademarks of their respective companies.

## 1. Introduction

GAT-PRO is a powerful GPS tracker designed for fixed asset tracking applications. GAT-PRO works with two CR123A lithium-batteries. GAT-PRO wakes up every 1-40 hours and sends the info and then returns to deepsleep. GAT-PRO can standby 1000 days. With built-in motion sensor, GAT-PRO can also detect the motion of asset all the time and give a warning message. Based on the integrated @Track protocol, the GAT-PRO can communicate with a backend server through the GPRS/GSM network to transfer reports of emergency, geo-fence boundary crossings, low battery or scheduled GPS position along with many other useful functions. System Integrators can easily set up their tracking systems based on the full-featured @Track protocol.

This device complies with Part 15 of the FCC Rules. Operation is subject to the following two conditions:

- (1) This device may not cause harmful interference.
- (2) This device must accept any interference received, including interference that may cause undesired operation.

### 1.1. Reference

Table 1. GAT-PRO Protocol Reference

SN	Document name	Remark
[1]	GAT-PRO @SMS & @Track Interface Protocol	The @SMS & @Track protocol interface between GAT-PRO and backend server.

### 1.2. Terms and Abbreviations

Table 2. Terms and Abbreviations

Abbreviation	Description
AGND	Analog Ground
AIN	Analog Input
DIN	Digital Input
DOUT	Digital Output
GND	Ground
MIC	Microphone
RXD	Receive Data
TXD	Transmit Data
SPKN	Speaker Negative
SPKP	Speaker Positive

**For More Information:** Please contact TrackingTheWorld, 1633 Bayshore Highway, Suite 390, Burlingame, CA. 94010, USA  
Phone: +1.650.692.8100 – Email: [info@trackingtheworld.com](mailto:info@trackingtheworld.com) – Website: [www.trackingtheworld.com](http://www.trackingtheworld.com)

Copyright © TrackingTheWorld. All rights reserved. Information in this publication supersedes that in all previously published material. Specification and price change privileges reserved. All trade names referenced are the service marks, trademarks, or registered trademarks of their respective companies.

## 2. Product Overview

### 2.1. Check Parts List

Before starting, check all the following items have been included with your GAT-PRO. If anything is missing, please contact your supplier.



**Figure 1.      Appearance of GAT-PRO**



**For More Information:** Please contact TrackingTheWorld, 1633 Bayshore Highway, Suite 390, Burlingame, CA. 94010, USA  
Phone: +1.650.692.8100 – Email: [info@trackingtheworld.com](mailto:info@trackingtheworld.com) – Website: [www.trackingtheworld.com](http://www.trackingtheworld.com)

Copyright © TrackingTheWorld. All rights reserved. Information in this publication supersedes that in all previously published material. Specification and price change privileges reserved. All trade names referenced are the service marks, trademarks, or registered trademarks of their respective companies.



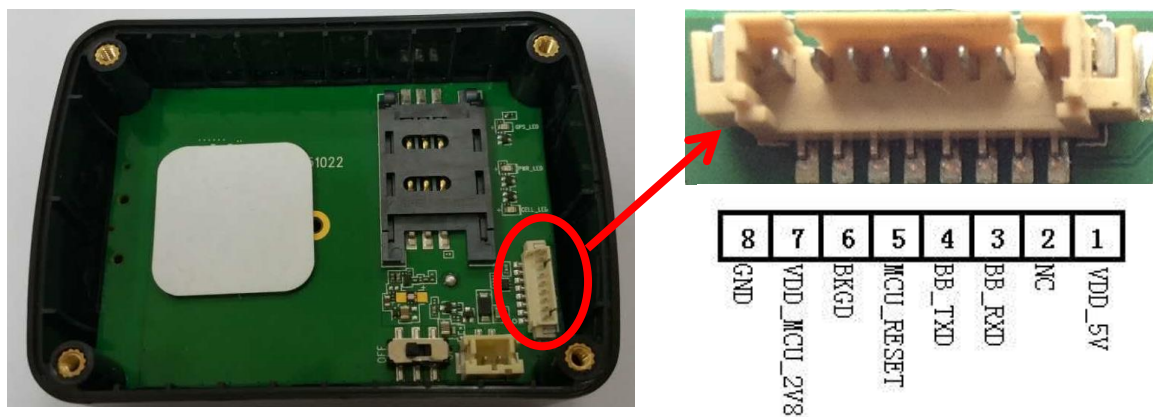
## 2.2. Parts List

Table 3. Parts List

Name	Picture
GAT-PRO Locator	80*58*26.8 mm
GAT-PRO Data Cable (Optional)	
GAT-PRO MCU Download Kit (Optional)	

## 2.3. Interface Definition

The GAT-PRO has an 8 PIN interface connector. It contains the connections for power, RS232, MCU Interface, etc. The sequence and definition of the 8PIN connector are shown in following figure:



**Figure 2. The 8 PIN connector on the GAT-PRO**

**For More Information:** Please contact TrackingTheWorld, 1633 Bayshore Highway, Suite 390, Burlingame, CA. 94010, USA  
Phone: +1.650.692.8100 – Email: [info@trackingtheworld.com](mailto:info@trackingtheworld.com) – Website: [www.trackingtheworld.com](http://www.trackingtheworld.com)

Copyright © TrackingTheWorld. All rights reserved. Information in this publication supersedes that in all previously published material. Specification and price change privileges reserved. All trade names referenced are the service marks, trademarks, or registered trademarks of their respective companies.

Table 4. **Description of 8 PIN Connections**

Index	Description	Comment
1	VDD_5V	External DC power input, 5V
2	NC	Not connected
3	BB_RXD	BB UART RXD
4	BB_TXD	BB UART TXD
5	MCU_RESET	MCU CHIP RESET SIGNAL
6	BKGD	MCU CHIP BKGD SIGNAL
7	VDD_MCU_2V8	MCU POWER INPUT, 2.8V
8	GND	Power and digital ground

**For More Information:** Please contact TrackingTheWorld, 1633 Bayshore Highway, Suite 390, Burlingame, CA. 94010, USA  
Phone: +1.650.692.8100 – Email: [info@trackingtheworld.com](mailto:info@trackingtheworld.com) – Website: [www.trackingtheworld.com](http://www.trackingtheworld.com)

Copyright © TrackingTheWorld. All rights reserved. Information in this publication supersedes that in all previously published material. Specification and price change privileges reserved. All trade names referenced are the service marks, trademarks, or registered trademarks of their respective companies.

## 3. Getting Started

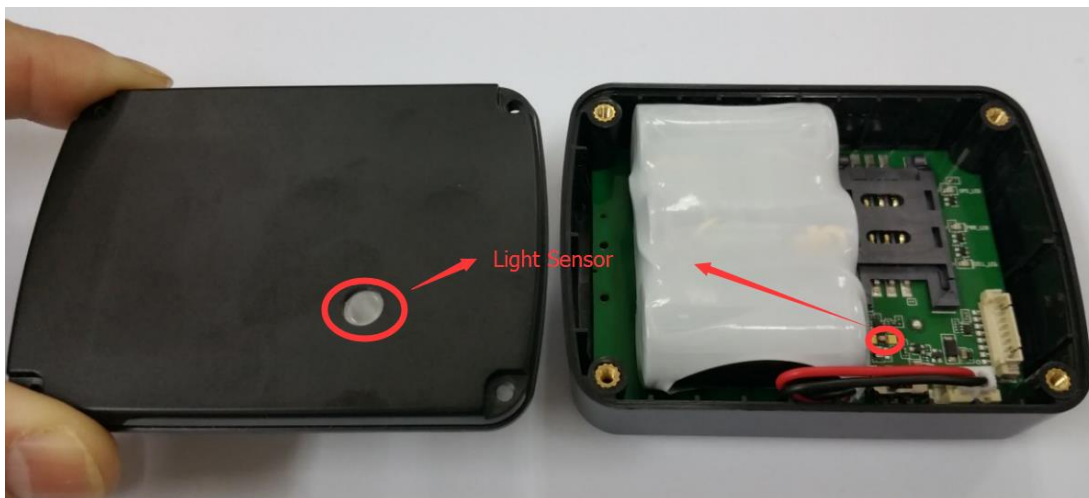
### 3.1. Opening the Case



**Figure 3. Opening the Case**

Use the Screwdriver to remove the screws, and then open the case.

### 3.2. Closing the Case



**Figure 4. Closing the Case**

Place the cover in the correct position and then tighten the screws with a Screwdriver.

**For More Information:** Please contact TrackingTheWorld, 1633 Bayshore Highway, Suite 390, Burlingame, CA. 94010, USA  
Phone: +1.650.692.8100 – Email: [info@trackingtheworld.com](mailto:info@trackingtheworld.com) – Website: [www.trackingtheworld.com](http://www.trackingtheworld.com)

Copyright © TrackingTheWorld. All rights reserved. Information in this publication supersedes that in all previously published material. Specification and price change privileges reserved. All trade names referenced are the service marks, trademarks, or registered trademarks of their respective companies.

### 3.3. Installing a SIM Card

Open the case and ensure the unit is not powered (unplug the internal battery). Slide the holder right to open the SIM card. Insert the SIM card into the holder as shown below with the gold-colour contact area facing down taking care to align the cut mark. Close the SIM card holder. Close the case.

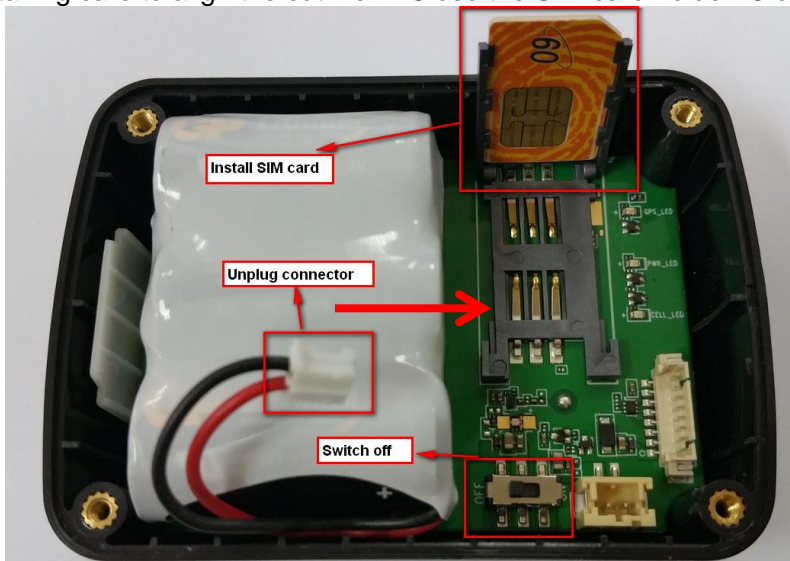


Figure 5. SIM Card Installation

### 3.4. Installing the Internal Backup Battery

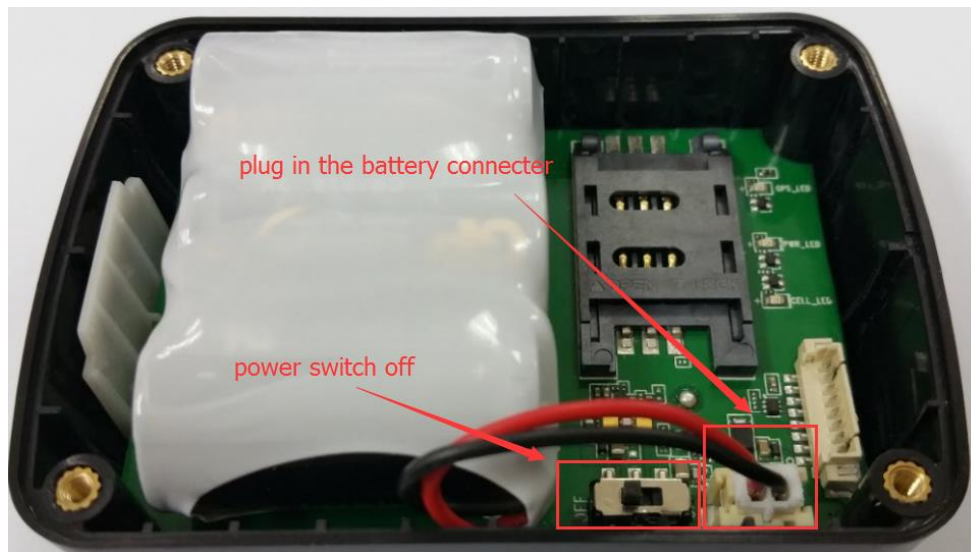


Figure 6. Backup Battery Installation

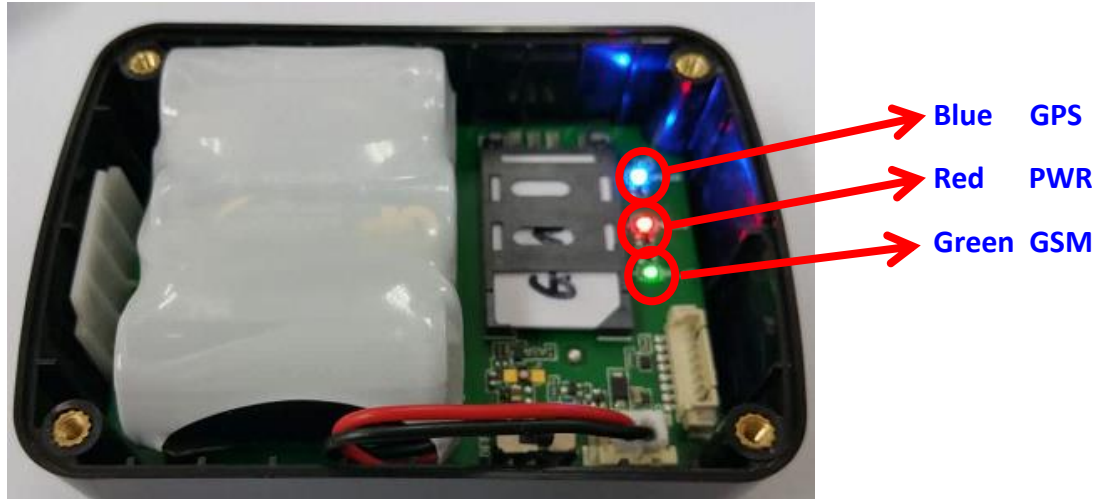
NOTE: Make sure the battery is switched OFF before installation.

**For More Information:** Please contact TrackingTheWorld, 1633 Bayshore Highway, Suite 390, Burlingame, CA. 94010, USA  
Phone: +1.650.692.8100 – Email: [info@trackingtheworld.com](mailto:info@trackingtheworld.com) – Website: [www.trackingtheworld.com](http://www.trackingtheworld.com)

Copyright © TrackingTheWorld. All rights reserved. Information in this publication supersedes that in all previously published material. Specification and price change privileges reserved. All trade names referenced are the service marks, trademarks, or registered trademarks of their respective companies.

### 3.5. Power On the Device

After inserted the Battery, GAT-PRO will power on automatically, the Status LED will start work, detail description in the next section.



**Figure 7. GAT-PRO Status LED**

### 3.6. Direction of GAT-PRO Placement

The side with label should point towards sky to ensure there is good GPS signal can be received.



**Figure 8. Direction of GAT-PRO Placement**

**For More Information:** Please contact TrackingTheWorld, 1633 Bayshore Highway, Suite 390, Burlingame, CA. 94010, USA  
Phone: +1.650.692.8100 – Email: [info@trackingtheworld.com](mailto:info@trackingtheworld.com) – Website: [www.trackingtheworld.com](http://www.trackingtheworld.com)

Copyright © TrackingTheWorld. All rights reserved. Information in this publication supersedes that in all previously published material. Specification and price change privileges reserved. All trade names referenced are the service marks, trademarks, or registered trademarks of their respective companies.

### 3.7. Device Status LED

Table 5. Definition of Device status and LED

LED	Device status	LED status
GSM (Green)	Device is searching GSM network.	Fast flashing (Note1)
	Device has registered to GSM network.	Slow flashing (Note2)
	SIM card needs pin code to unlock.	ON
GPS (Blue)	GPS chip is powered off.	OFF
	GPS sends no data or data format error.	Slow flashing
	GPS chip is searching GPS info.	Fast flashing
	GPS chip has gotten GPS info.	ON
PWR (Red)	Battery voltage is lower than 0%.	OFF
	Battery voltage is below 10%.	Slow flashing
	Battery voltage is more than 10%.	ON

1 - Fast flashing is about 60ms ON/ 780ms OFF

2 - Slow flashing is about 60ms ON/ 1940ms OFF

Note:

1. In Battery mode, all LEDs are only enabled at the first 5 minutes after power on the device, and then will be shut down all the time.

**For More Information:** Please contact TrackingTheWorld, 1633 Bayshore Highway, Suite 390, Burlingame, CA. 94010, USA  
Phone: +1.650.692.8100 – Email: [info@trackingtheworld.com](mailto:info@trackingtheworld.com) – Website: [www.trackingtheworld.com](http://www.trackingtheworld.com)

Copyright © TrackingTheWorld. All rights reserved. Information in this publication supersedes that in all previously published material. Specification and price change privileges reserved. All trade names referenced are the service marks, trademarks, or registered trademarks of their respective companies.